



# Education Programs 2023-2024



## A New Experience

The Museum has undergone many changes recently. Our new Interpretive Plan has led the redevelopment of new permanent exhibitions which means new experiences for you and your students.

The learning opportunities are endless as our friendly and engaging tour guides can accommodate and incorporate your learning objectives into our fun, interactive, and fast-paced style of programming.

If you don't find something that fits your needs here, please contact us! We are happy to work with you to develop something new and exciting.

We hope to see you soon.

Adrian Petry  
Visitor Services Coordinator

Abbey Stansfield  
Public Programmer

Sean Dineley  
Public Programmer

### To Book:

Please contact Abbey Stansfield  
at 905.984.8880 or  
[museum@stcatharines.ca](mailto:museum@stcatharines.ca)

## The Possibilities Are Endless

We're ready to help you get the most out of any tour or program. Use the legend below to select an experience best suited to the needs of you and your students.

### Legend



In-Person  
Experience



Virtual  
Experience



In-Class  
Visit



Site-Specific  
Adventure Program



Available  
Year-Round



Study Guides  
Available

On the cover: Liquid Natural Gas powered *Damia Desgagnes* enters Lock 3 downbound.

The CSL *Laurentien* in Lock 3 next to the **Viewing Platform**.



## What Educators Are Saying:

"The St. Catharines Museum educational programs are a great way to engage your class in curriculum related topics while enjoying our beautiful city and its history. The booking process is seamless, the cost is minimal, and the educational materials included are fantastic. We experienced the outreach program's 'Travelling Museum' in the fall, and an adventure-style program in the spring. Both encouraged our students to think critically, engage as historians/museum curators, and enjoy time spent together learning in a hands-on environment. Whether you are looking for a half day trip or someone to come into your classroom, the St. Catharines Museum education programs are for you!"

Mr. Josh Nunn  
Grade 5/6,  
Burleigh Hill Public School

"Our students had the pleasure of participating in several Educational Programs at Lock 3 Museum. These programs allow for students to make connections to their own community with hands-on experiences that they may otherwise not have. At the same time, the programs have many links to many areas of the Ontario Curriculum across the various subjects. Thanks to the Educational programs provided by Lock 3 Museum, students are given opportunities to learn about the historical aspects of St. Catharines, the importance of the Welland Canal System, and much more. I highly recommend that educators take advantage of the wonderful learning opportunities and local connections that the Lock 3 Museum Educator Programs offer to teachers and students!"

Mme. Mercedes Vallance  
Grade 3,  
Jeanne Sauvé French Immersion Public School

"We had a great time! The students loved learning about the history of the Canal and seeing the artifacts in the museum. Their favourite part was having the opportunity to see a boat from the viewing platform."

Mr. Raul Bado  
Grade 4/5,  
Park Public School

## FIRST WELLAND CANAL



The Welland Canal opened for the first time in 1829 and was a major engineering achievement.

People also changed. It had a profound impact on the lives of the people who lived along the canal.

## SECOND WELLAND CANAL



“Without the Welland Canal, the Dominion is little more than a home for cats and badgers.”  
The St. Catharines Journal

Discover the history of one of the great shipping canals of the world: the Welland Canal.



Built as a response to local economic and transportation needs in the 18th century, the Welland Canal is globally significant to the international economy and to global transportation in the 21st century.

The story of the canal is one of hard work, success, toil, settlement, loss and triumph, and ingenuity. The story of its construction touches all aspects of life in St. Catharines from settlement and immigration to manufacturing and transportation, from the physical and urban development of the city to the cultural identity of our community.

We are connected to this rich history through the people who surveyed, funded, built, and operated the canal for 200 years.

## Museum Programs and Experiences

### Junior Engineers



ELKP-Grade 3 | 45-60 minutes | Available May/June

The perfect program for those studying transportation. Through this highly interactive and outdoor program, students will become experts in transportation, engineering, and operations of the Welland Canal.

**NEW**

### Bright Ideas



Grades ELKP-5 | 45 minutes

Bright Ideas engages your students in an interactive exploration of the lives of innovative and change-making women from our City's History.

### On the Liberty Line: Early Black History in St. Catharines



Grades 3-12 | 60-90 minutes

Trace the journey to freedom through a history of slavery and emancipation, racism and prejudice, while exploring the lives of St. Catharines' first African-Canadian settlers in this interactive program. Study guide available.

**NEW**

### The Welland Canals



Grades 3-12 | 60-90 minutes

Explore the development and operations of the historic Welland Canals in our fun and interactive guided experience of our new Welland Canals exhibit. Students will see the world-renowned engineering marvel first-hand and participate in engaging curriculum-based and local history activities. Study guide available.

### The Promise of Hope: Immigration and St. Catharines



Grades 6-10 | 90 minutes

From the Loyalists to the Freedom Seekers, to canal labourers and more, this special museum experience weaves individual stories of hope, fear, success, and loss into a relevant and accessible exploration of immigration to St. Catharines over the last 200 years. Study guide available.

**NEW**

### Stories from the Front



Grades 9-12 | 60 minutes

Live Presentation November 1, 2, 6-9

Hear the experiences of St. Catharines soldiers in the First and Second World Wars. Featuring primary sources from the Museum's collection, this 60-minute program will help students gain a deeper understanding and appreciation for the lives and challenges experienced by soldiers and their families. A primary resource study guide is available. Limited to two classes per session.

Rochelle Bush, historian and trustee, Salem Chapel, BME Church National Historic Site, speaks to students during the **Last Stop Walking Tour** in 2022.



# Site-Specific and Adventure-Style Programs

NEW  
PROGRAMS

**NEW**

## Ride On! The Historic Lakeside Park Carousel



Grades ELKP-5 | Half-Day Program | Available June

Explore the historic fun of Lakeside Park with heritage games and activities. This fast-paced program includes a ride on the historic Lakeside Park Carousel! It's the perfect year-end trip.

## Hiking Through History at Mountain Locks Park or Jaycee Gardens



Grades 6-8 | Half-Day Program | Available Sept./Oct./May/June

Adventure awaits students in this new, outdoor, phys-ed-meets-history program in Mountain Locks Park or Jaycee Gardens. Students will participate in fun, interactive, exploration-based activities while learning about the Welland Canals and our City's local built heritage. Wear running shoes and dress for the weather; it's going to be an exciting time!

## Where's the Pig? in Downtown St. Catharines



Grades 6-12 | Half-Day Program | Available Sept./Oct./May/June

A pig has escaped and is roaming the streets of downtown St. Catharines! We need your help to find her! In this guided adventure program, students will use primary sources and inferencing skills to gather clues and determine the location of a real-life pig that got loose on the streets of St. Catharines in 1945.

## Last Stop: the Underground Railroad in Downtown St. Catharines Walking Tour



Grades 6-12 | Full Day Program | May 1, 8, 15, 22, and 29

Take a guided walking tour of Downtown St. Catharines to visit locations significant to the Freedom Seekers who found refuge in St. Catharines and learn about their experiences here. Hear stories of their settlement in Coloured Town, the work of local abolitionists, and Harriet Tubman's time at the Salem Chapel. This full-day tour includes a tour of Salem Chapel, British Methodist Episcopal Church, National Historic Site.

**NEW**

## Canal Walk: Merritt Trail or Lock 3 and Fallen Workers Memorial



Grades 7-12 | 120 Minutes | Available April/May

Select one of three sections of the Merritt Trail to explore the historic First and Second Welland Canals, lock remnants, and some of the best built heritage in the city. Or, enjoy a guided walk along today's canal to discover its importance to our local and national history, environment and economy. This walk includes a visit to the Fallen Workers Memorial.



An escaped pig on the loose on Ontario Street in 1945. This photo inspired the **Where's the Pig?** downtown walking tour. STCM S1945.5.10.3



## Classroom Visits

Enjoy the museum from the comfort of your own classroom with a visit from one of our museum professionals.

**FREE**

### Travelling Museum

  Grades 4-6 | 90 minutes

Led by Museum staff, the Travelling Museum is designed to give students a behind-the-scenes look at museum work. Full of hands-on activities and new content. Free for schools in Niagara; a mileage fee applies to schools outside of St. Catharines.

**FREE**

### The Jr. Travelling Museum

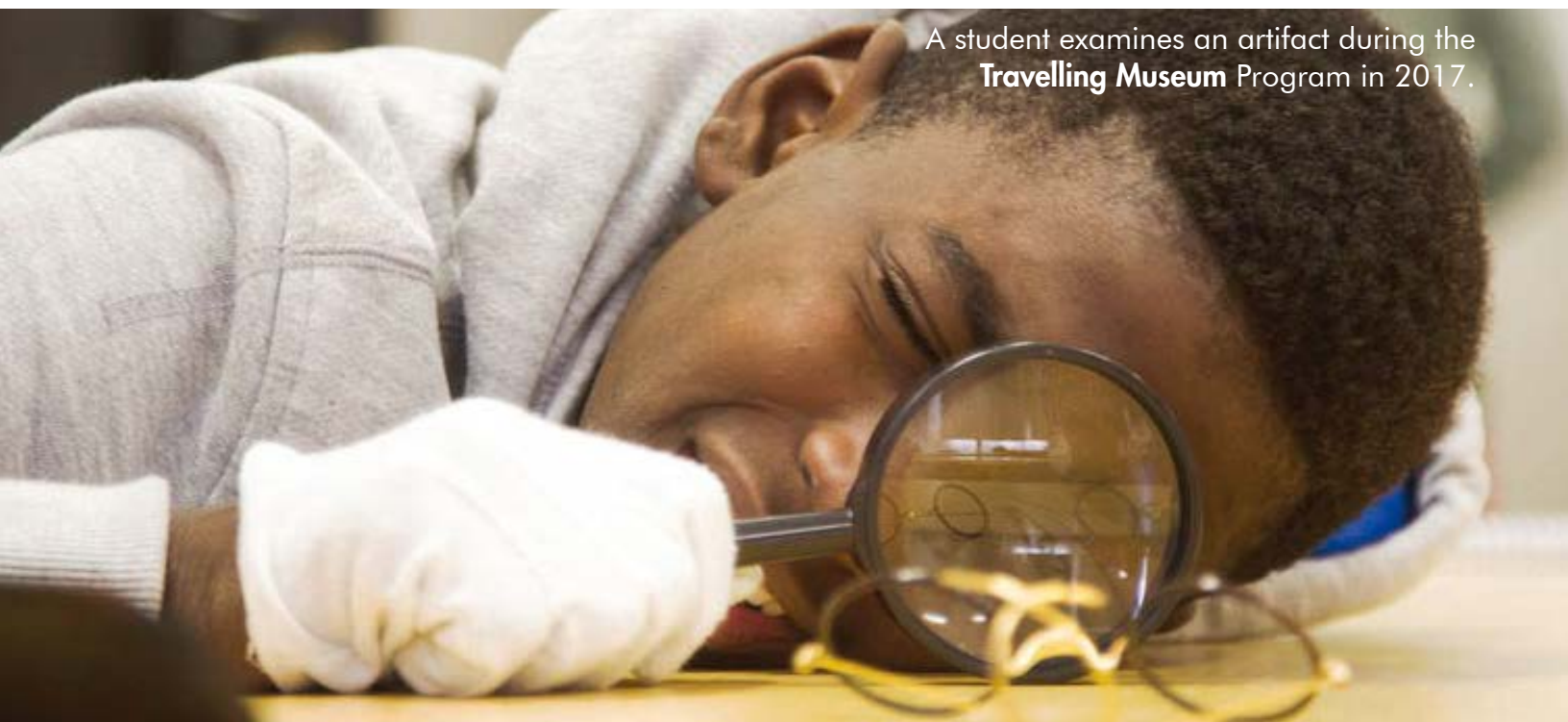
  Grades ELKP-3 | 60 minutes

Designed especially for young historians! Hands-on exploration and activities designed for students in Kindergarten to Grade 3. Free for schools in Niagara; a mileage fee applies to schools outside of St. Catharines.

### Heritage Fair Workshop

 Grades 4-8 | 90 minutes | January - March

Inspire your students' own Heritage Fair projects with this in-classroom workshop led by Museum historians. Hands-on activities are designed to help students research, create and curate their own project. Student fee applies.



A student examines an artifact during the **Travelling Museum** Program in 2017.

A group of **Junior Engineers** investigating cargo in **Discovery Park**.



## EduKits

Our revised EduKits align with the curriculum and provide teachers and students with primary and secondary source materials, lessons and activities, along with historic reproductions for hands-on student exploration.

EduKits are rented for a 10-day period. Kits are picked-up on Wednesdays and returned on Fridays during business hours.

### The Four Welland Canals



Grades 3-8

Social Studies, History and Geography, Science and Technology.

### Early Settlers in Upper Canada



Grade 3

Social Studies.

## NEW Pop-Up Exhibits

Rent a pop-up exhibit for your library or common space.

### In Service: Military Service and Remembrance in St. Catharines



The War, Peace and Remembrance Pop-Up Exhibit uses descriptive text, images, and replica artifacts to highlight the contributions of St. Catharines' community members in times of conflict. With this pop-up exhibit, students will gain a richer and deeper understanding of the contributions of local people from the community made in national service.



### THE GREAT LAKES & ST. LAWRENCE SEAWAY

**USING THE SEAWAY**

Mode	Weight	Volume	Value
Grain	1.5 million metric tons	1.5 million m <sup>3</sup>	\$1.5 billion
Coal	1.5 million metric tons	1.5 million m <sup>3</sup>	\$1.5 billion
Iron Ore	1.5 million metric tons	1.5 million m <sup>3</sup>	\$1.5 billion
Crude Oil	1.5 million metric tons	1.5 million m <sup>3</sup>	\$1.5 billion
Manufactured Goods	1.5 million metric tons	1.5 million m <sup>3</sup>	\$1.5 billion
Timber	1.5 million metric tons	1.5 million m <sup>3</sup>	\$1.5 billion
Other	1.5 million metric tons	1.5 million m <sup>3</sup>	\$1.5 billion

**TYPICAL CARGOES**

### THE WELAND CANAL

**LAKE ONTARIO**

**LAKE ERIE**

### CLEAVING THE MOUNTAIN

**LOCKING THROUGH**

**LOCK 3 FROM ABOVE**

### SAFETY ON THE CANAL

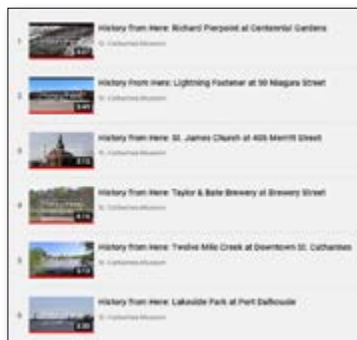


*The Canals Gallery*, located off of the lobby.

# Self-Use Virtual Experiences

FREE

Head over to our YouTube Channel for history videos and activities for every grade level. Learn more about our rich local history in a mini “virtual field trip” with the **History from Here** video series, make our city’s built heritage out of **Lego**, explore the museum’s collection, take in in-depth lectures, learn more about the Welland Canal and participate in an **I-Spy Tour**. It’s all at your fingertips.



Screen shots of videos and play lists on our YouTube Channel.

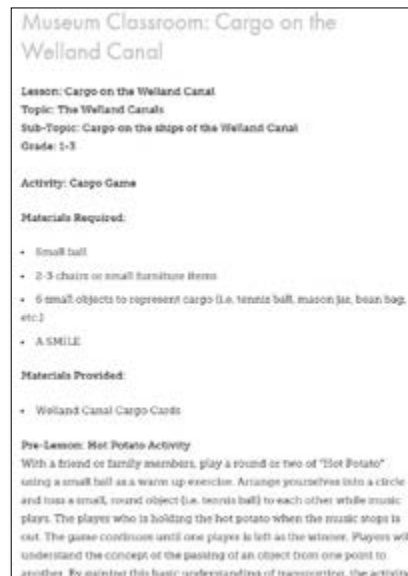


# Museum Classroom

Check out **Museum Classroom** on our blog [www.stcatharinesmuseumblog.com](http://www.stcatharinesmuseumblog.com) for all sorts of fun activities doable from home or in the classroom. All your learners, no matter their schedule, access to technology, or location, will be able to participate with these lesson plans.



Museum Classroom on the blog.



Sample Lesson Plan.



Families picnic in **Discovery Park**, next to Lock 3.

## Planning Your Visit

### Admission Rates

\$4.70/student, (HST included) for guided tours, programs, and experiences except the Jr. Travelling Museum and Travelling Museum programs which are presented free of charge. Rates and fees listed are for the 2023 calendar year and are subject to change without notice.

Students must be accompanied by adults at a suggested 1:10 ratio. Admission for additional adults is \$5.50 (HST included).

### Self-Guided Visits

Self-guided visits are available by donation. Please book your self-guided tour in advance to avoid disappointment.

### Group Sizes

Listed program and experience lengths accommodate groups of approximately 30 students or 1 class. Please contact us to discuss accommodating groups larger than 30 students or 1 class.

### Bookings

Bookings for guided tours and programs can be made by contacting the St. Catharines Museum and Welland Canals Centre at 905.984.8880 or by email [museum@stcatharines.ca](mailto:museum@stcatharines.ca).

### Ship Schedules

Ship schedules are posted daily; however, the schedule remains subject to change and is managed by the Great Lakes/St. Lawrence Seaway Management Corporation. We welcome visitors to the **Lock 3 Viewing Platform** whenever the opportunity arises.

### Niagara Region Transit

Transit buses run to and from the Museum on a regular basis. See [nrtransit.ca](http://nrtransit.ca) for more information.

On the back cover: The Laker *Montrealais* moves through the Homer Bridge as it approaches Lock 3.



discover #stcmuseum

 /stcatharinesmuseum

 @stcmuseum

 @stcmuseum

 stcatharines  
museumblog.com

 stcmuseum podcasts  
google · iTunes · soundcloud

 stcatharinesmuseum

 St. Catharines

1932 Welland Canals Parkway, St. Catharines, ON L2R 7K6

t: 905.984.8880 tf: 1.800.305.5134

e: museum@stcatharines.ca

w: www.stcatharinesmuseum