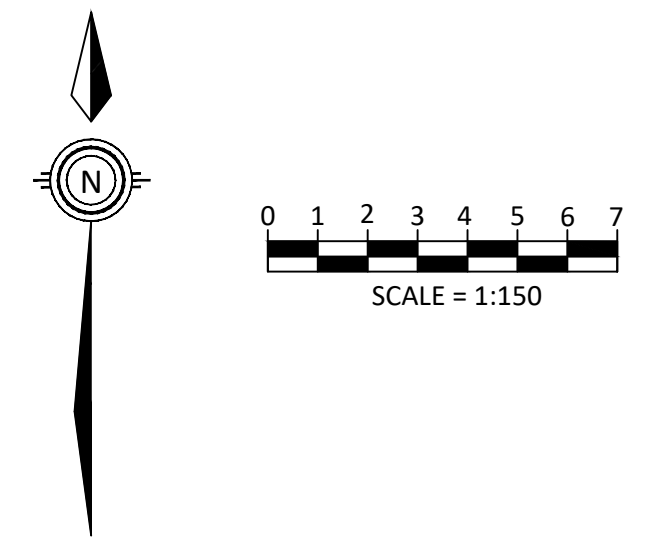




Key Map: Not to Scale



### Site Statistics

Total Lot Area = 1,950.52 m<sup>2</sup>

#### 4 Welland Vale Road

	Existing	Proposed
Lot Area	923.04 m <sup>2</sup>	478.02 m <sup>2</sup>
Units	4	4
Parking Stalls	5	0
Parking Coverage	22.79%	0.0%
Landscaped Open Space	50.70%	60.9%

#### 179 Ontario Street

	Existing	Proposed
Lot Area	1,027.44 m <sup>2</sup>	588.8 m <sup>2</sup>
Units	0	12
Parking Stalls	0	0
Parking Coverage	14.4%	0.0%
Landscaped Open Space	85.6%	53.4%

#### Common Element

	Proposed (#)	Proposed (%)
Lot Area	883.74 m <sup>2</sup>	100%
Parking Stalls	14	
Parking Coverage	503 m <sup>2</sup>	56.9%
Landscaped Open Space	380.74 m <sup>2</sup>	43.1%

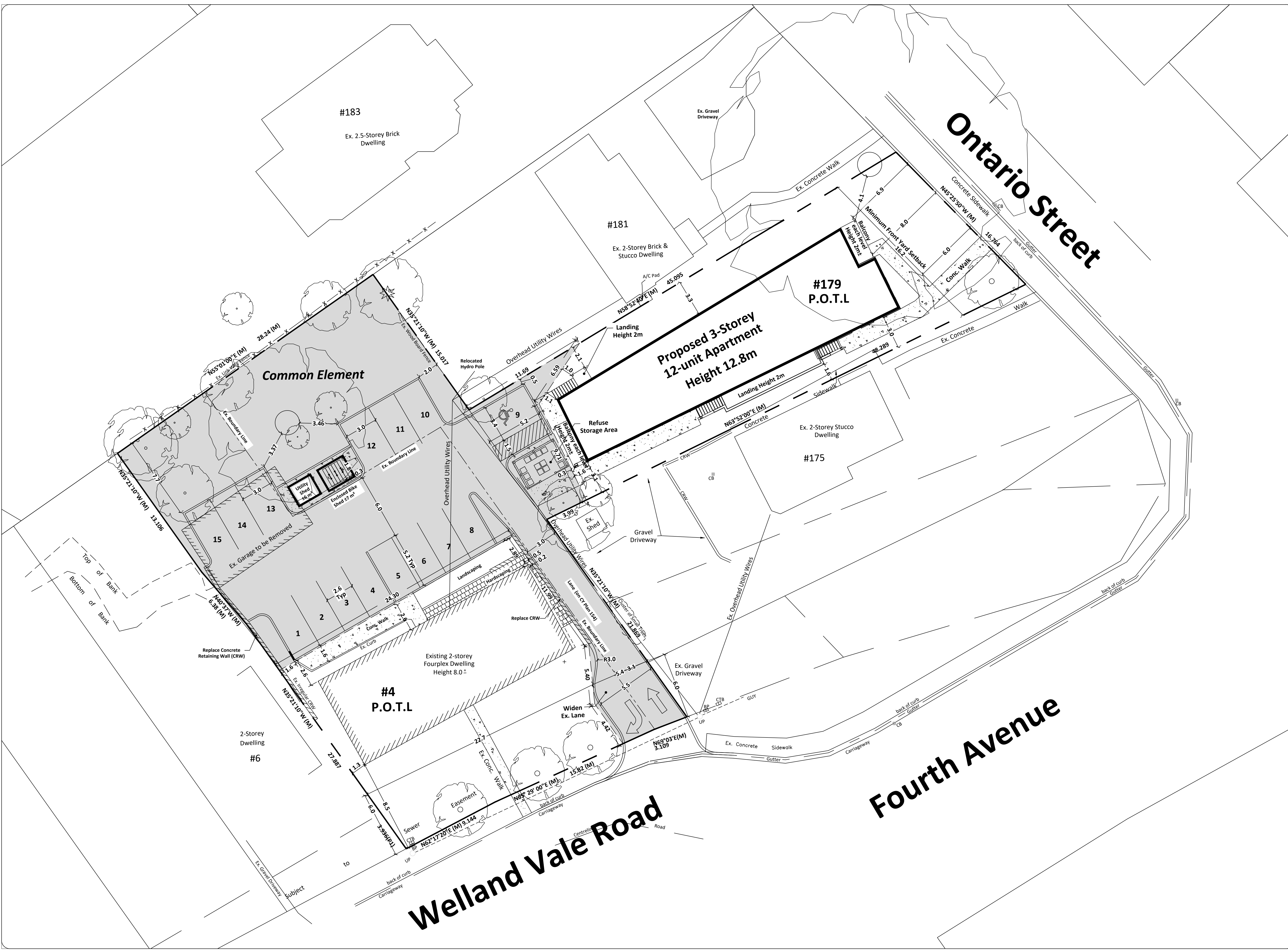


Project:  
179 Ontario St &  
4 Welland Vale Road  
St. Catharines, Ontario

Drawing:  
Site Plan

Issue Date:  
2024-02-14

Dwg No.: 0362-SP-1 Rev No.: 0



# Fourth Avenue

# Welland Vale Road

# Ontario Street





1 Elevation - SOUTH  
1: 100



2 Elevation - EAST  
1: 100

OWNERSHIP AND USE OF DRAWINGS  
Drawings and Specifications are the property of the Architect. These drawings are not to be used for any other project or purpose, or for any other work or in part, for any other project or purpose, without the specific written authorization of the Architect.

MACDONALD ZUBEREC  
ENSSLEN Architects Inc.  
STUDIO 403  
39 QUEEN STREET ON L2R 5G8  
ST. CATHARINES  
WWW.MAZEARCHITECTS.COM  
P 905.685.4467 INFO@MAZEARCHITECTS.COM

No.	Revisions:	Date:

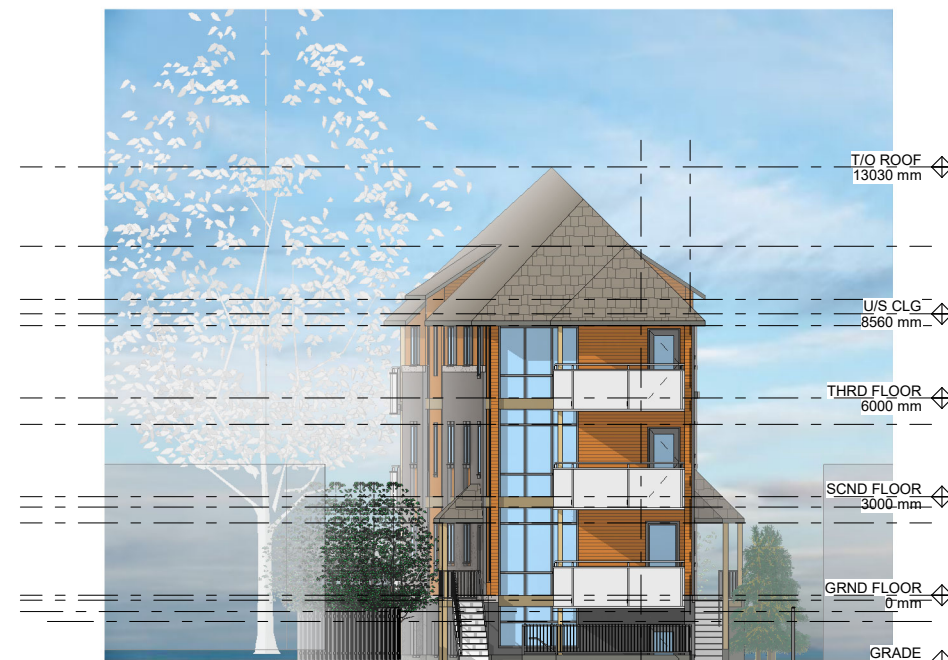
File No: 21-06  
Scale: 1: 100  
Drawn By: MZE  
Plot Date: 04/21/23 5:28 PM  
Issue Date:      Issue Date

PROPOSED MULTI-UNIT DEVELOPMENT  
Dr. Raymond D'Archi  
179 Ontario Street, St. Catharines, Ontario  
SCHEMATIC DESIGN - ELEVATIONS

**P3C**



4 Elevation - NORTH  
1: 100



3 Elevation - WEST  
1: 100