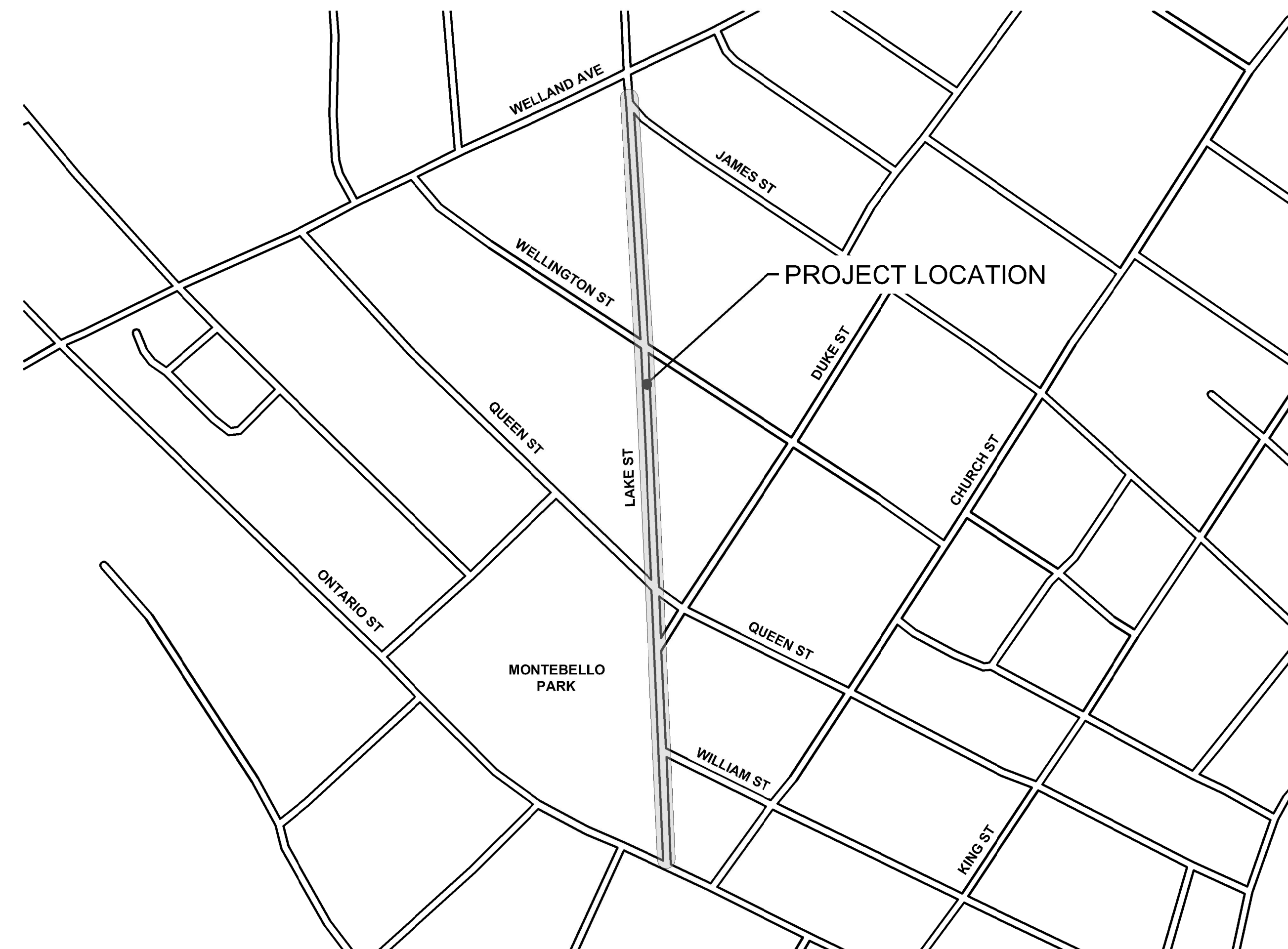


St. Catharines

**LAKE STREET ROAD IMPROVEMENTS
BETWEEN ONTARIO STREET & WELLDAND AVENUE
IN THE CITY OF ST. CATHARINES**



LOCATION PLAN - (NOT TO SCALE)

**WALTER SENDZIK
MAYOR**

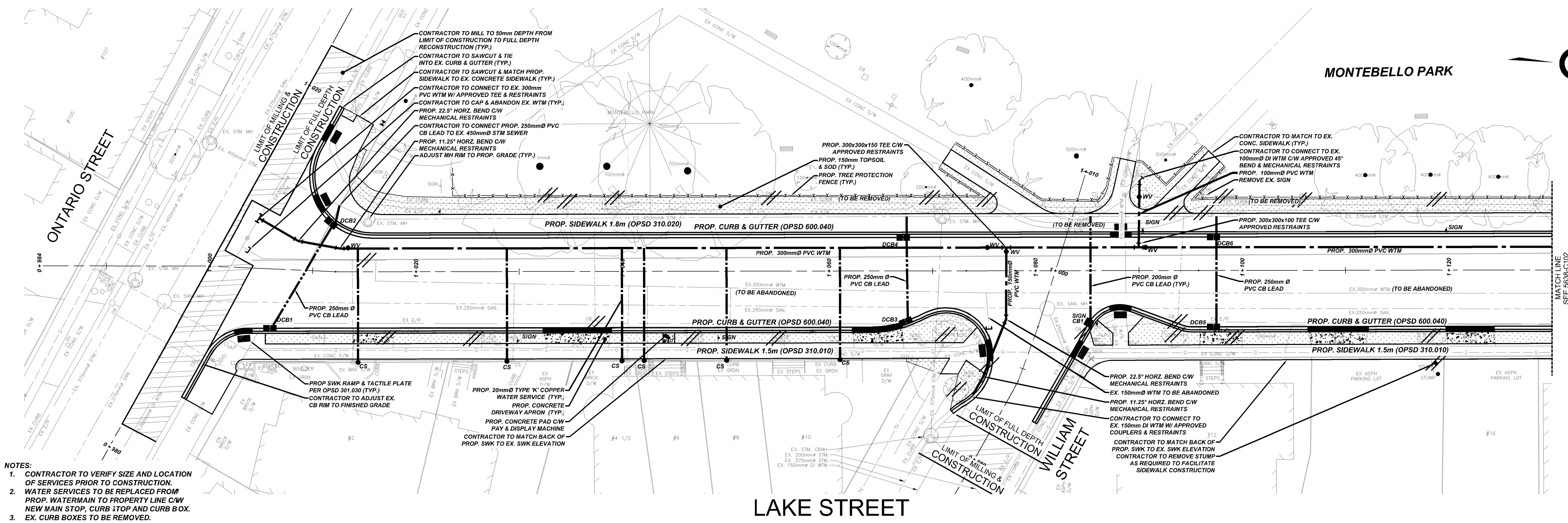
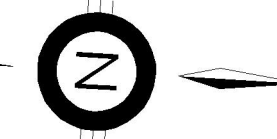
**ANTHONY MARTUCCIO
DIRECTOR OF ENGINEERING,
FACILITIES & ENVIRONMENTAL
SERVICES**

**CAPITAL PROJECT
No. P18-062-1**

**LAKE STREET ROAD IMPROVEMENTS
BETWEEN ONTARIO STREET & WELLDAND AVENUE
IN THE CITY OF ST. CATHARINES**

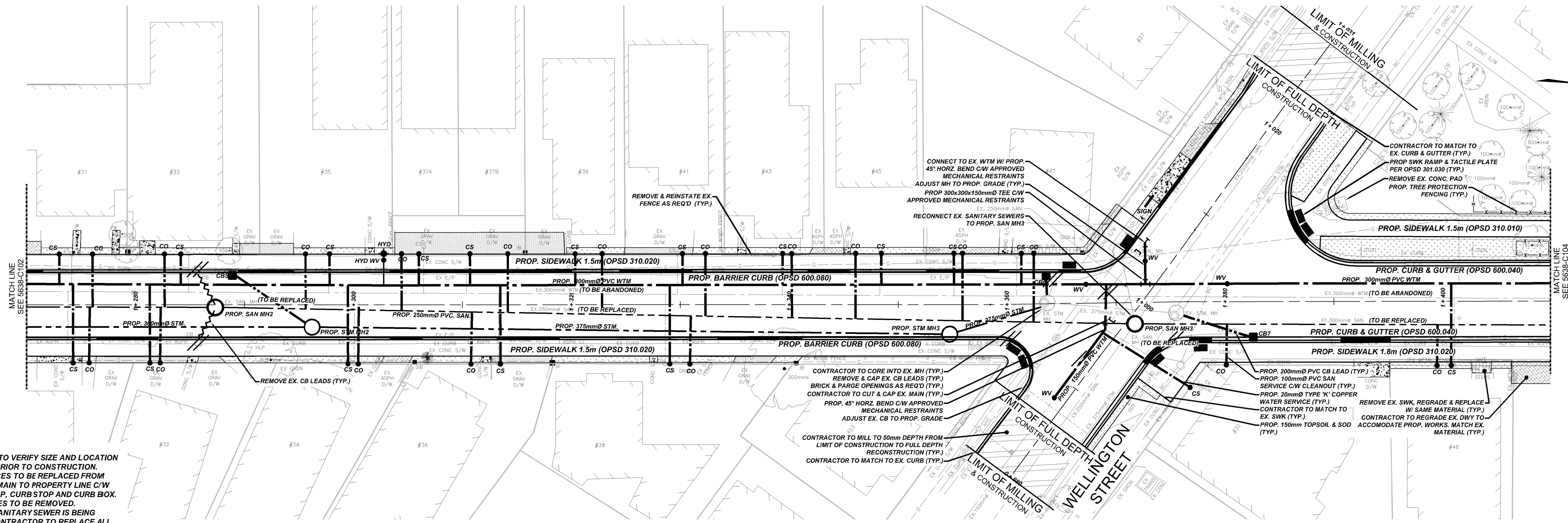
NO.	REVISION	DATE	BY
0	ISSUED FOR TENDER	4/9/2022	FB
A	ISSUED FOR 30% REVIEW	8/23/2019	PZ

MONTEBELLO PARK



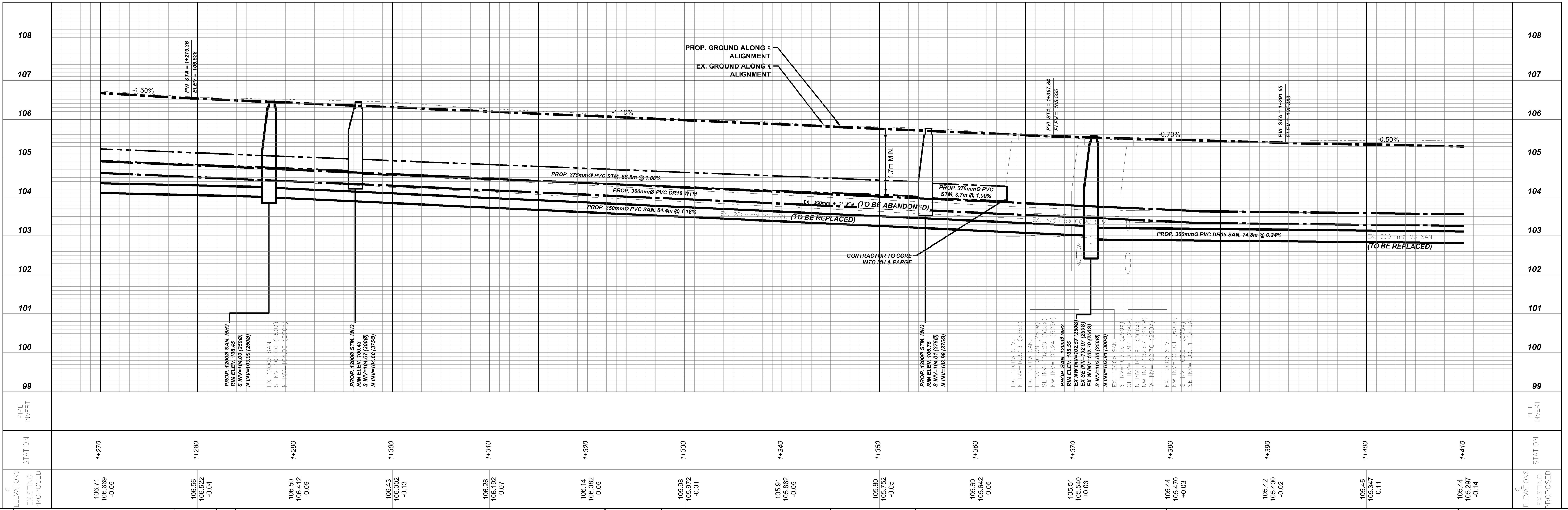
STATION	ELEVATIONS	PROPOSED	EXISTING																																				
108																																							
107																																							
106																																							
105																																							
104																																							
103																																							
102																																							
101																																							
100																																							
99																																							
STATION	1+000	1+010	1+020	1+030	1+040	1+050	1+060	1+070	1+080	1+090	1+100	1+110	1+120	1+130																									
ELEVATIONS	106.32	106.316	0.00	106.41	106.425	-0.16	106.46	106.365	-0.09	106.44	106.425	-0.02	106.46	106.485	+0.03	106.47	106.450	-0.02	106.51	106.436	-0.07	106.54	106.516	-0.02	106.59	106.495	-0.10	106.66	106.486	-0.17	106.75	106.581	-0.11	106.82	106.676	-0.14	106.88	106.771	-0.11

<p>DRAFTING: JTB</p> <p>DESIGN: JTB</p> <p>CHECKED BY: MM</p> <p>APPROVED BY: AL</p>		<p>ST. CATHARINES</p> <p>Associated Engineering</p>		<p>LAKE STREET ROAD IMPROVEMENTS</p> <p>FROM WELAND AVE TO ONTARIO ST</p> <p>IN THE CITY OF ST. CATHARINES</p> <p>ROAD GEOMETRICS</p> <p>STA 1+000 TO 1+130</p>		<p>CONSULTANT FILE No. 2022-5638</p> <p>DATE: MAY 2021</p> <p>SCALE: HORIZ: 1:200 VERT: 1:50</p> <p>REF. No. P18-062-1</p> <p>DWG No. 5638-C101</p> <p>REV. 0</p>	
--	--	--	--	--	--	--	--



- NOTES:**
- CONTRACTOR TO VERIFY SIZE AND LOCATION OF SERVICES PRIOR TO CONSTRUCTION.
 - WATER SERVICES TO BE REPLACED FROM PROP. WATERMAIN TO PROPERTY LINE C/W NEW MAIN STOP, CURB STOP AND CURB BOX. EX. CURB BOXES TO BE REMOVED.
 - WHERE NEW SANITARY SEWER IS BEING INSTALLED, CONTRACTOR TO REPLACE ALL EX. SANITARY LATERALS W/ 199mm DIA. DR28 PVC TO PROPERTY LINE INCLUDING CLEANOUT.

LAKE STREET

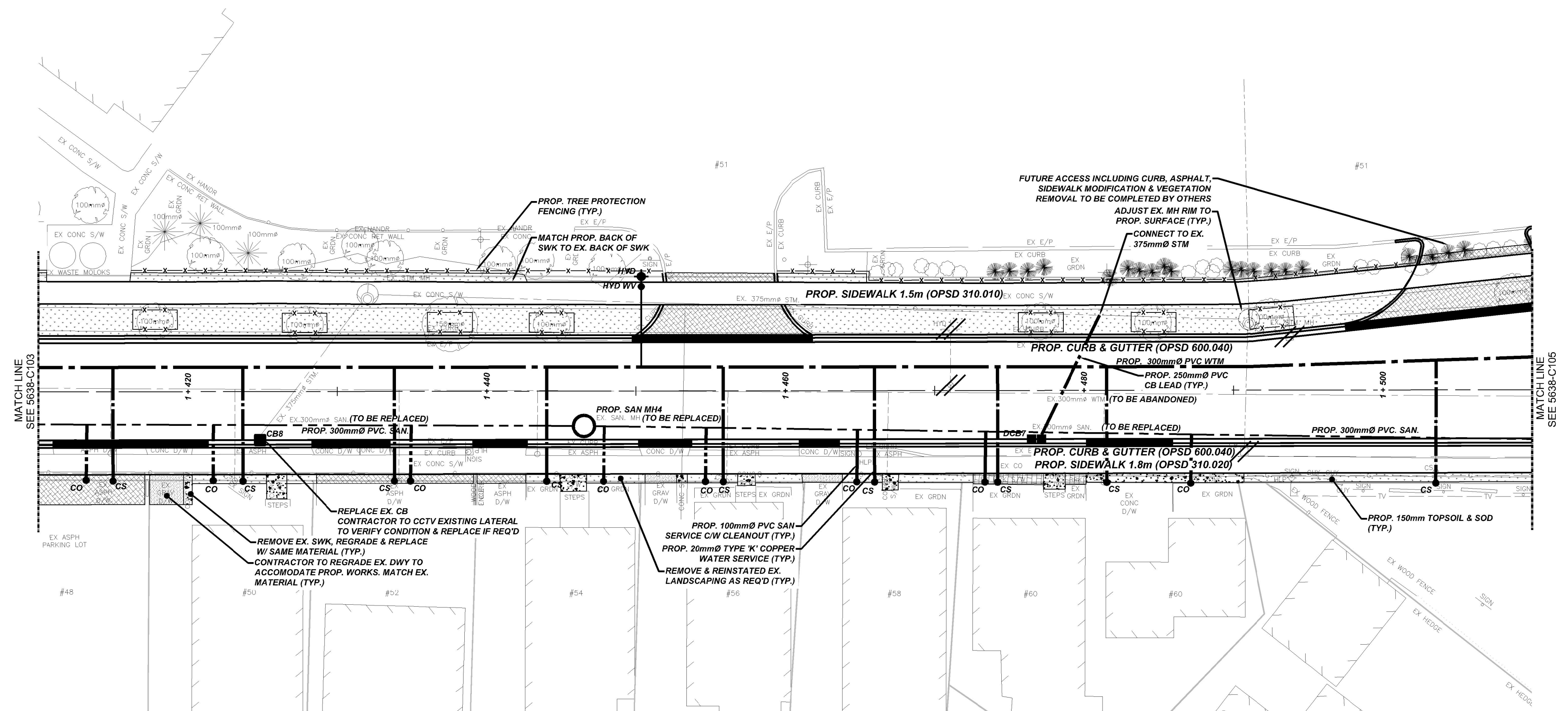
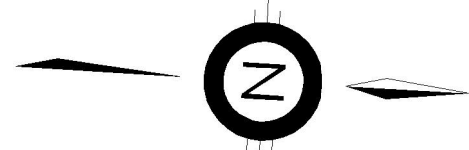


STATION	ELEVATIONS EXISTING PROPOSED	PIPE INVERT
1+270	106.71 106.699 -0.05	
1+280	106.56 106.522 -0.04	
1+290	106.50 106.52 -0.09	
1+300	106.43 106.302 -0.13	
1+310	106.26 106.192 -0.07	
1+320	106.14 106.082 -0.05	
1+330	105.98 105.972 -0.01	
1+340	105.61 105.582 -0.05	
1+350	105.80 105.752 -0.05	
1+360	105.69 105.642 -0.05	
1+370	105.51 105.540 +0.03	
1+380	105.44 105.470 +0.03	
1+390	105.42 105.400 -0.02	
1+400	105.45 105.347 -0.11	
1+410	105.44 105.297 -0.14	

ST. CATHARINES
Associated Engineering

LAKE STREET ROAD IMPROVEMENTS
FROM WELAND AVE TO ONTARIO ST
IN THE CITY OF ST. CATHARINES
ROAD GEOMETRICS
STA 1+270 TO 1+410

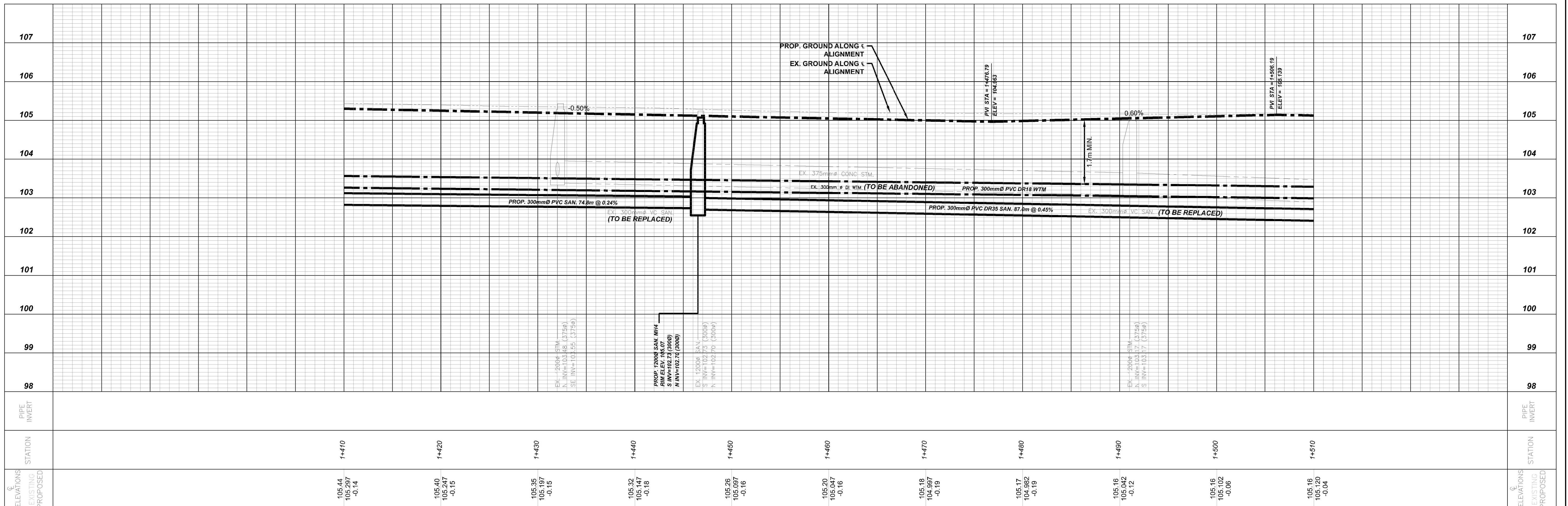
CONSULTANT FILE No. 2022-5638
DATE MAY 2021
SCALE Hor: 1:200 m Ver: 1:50 m
REF. No. P18-062-1
DWG No. 5638-C103
REV. 0



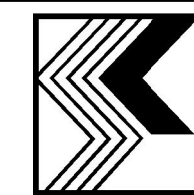
NOTES:

1. CONTRACTOR TO VERIFY SIZE AND LOCATION OF SERVICES PRIOR TO CONSTRUCTION.
2. WATER SERVICES TO BE REPLACED FROM PROP. WATERMAIN TO PROPERTY LINE C/W NEW MAIN STOP, CURB STOP AND CURB BOX.
3. EX. CURB BOXES TO BE REMOVED.
4. WHERE NEW SANITARY SEWER IS BEING INSTALLED, CONTRACTOR TO REPLACE ALL EX. SANITARY LATERALS W/ 199mm DIA. DR28 PVC TO PROPERTY LINE INCLUDING CLEANOUT.

LAKE STREET



NO.	DATE	REVISION	INIT.	DRAFTING	JTB	DESIGN	JTB	CHECKED BY	MM	APPROVED BY	AL	ELEVATIONS		STATION	PIPE INVERT
												EXISTING	PROPOSED		
												105.44	105.297	1+410	
												105.40	105.247	1+420	
												105.35	105.197	1+430	
												105.32	105.147	1+440	
												105.26	105.097	1+450	
												105.20	105.047	1+460	
												105.18	104.997	1+470	
												105.17	104.982	1+480	
												105.16	105.042	1+490	
												105.16	105.102	1+500	
												105.16	105.120	1+510	



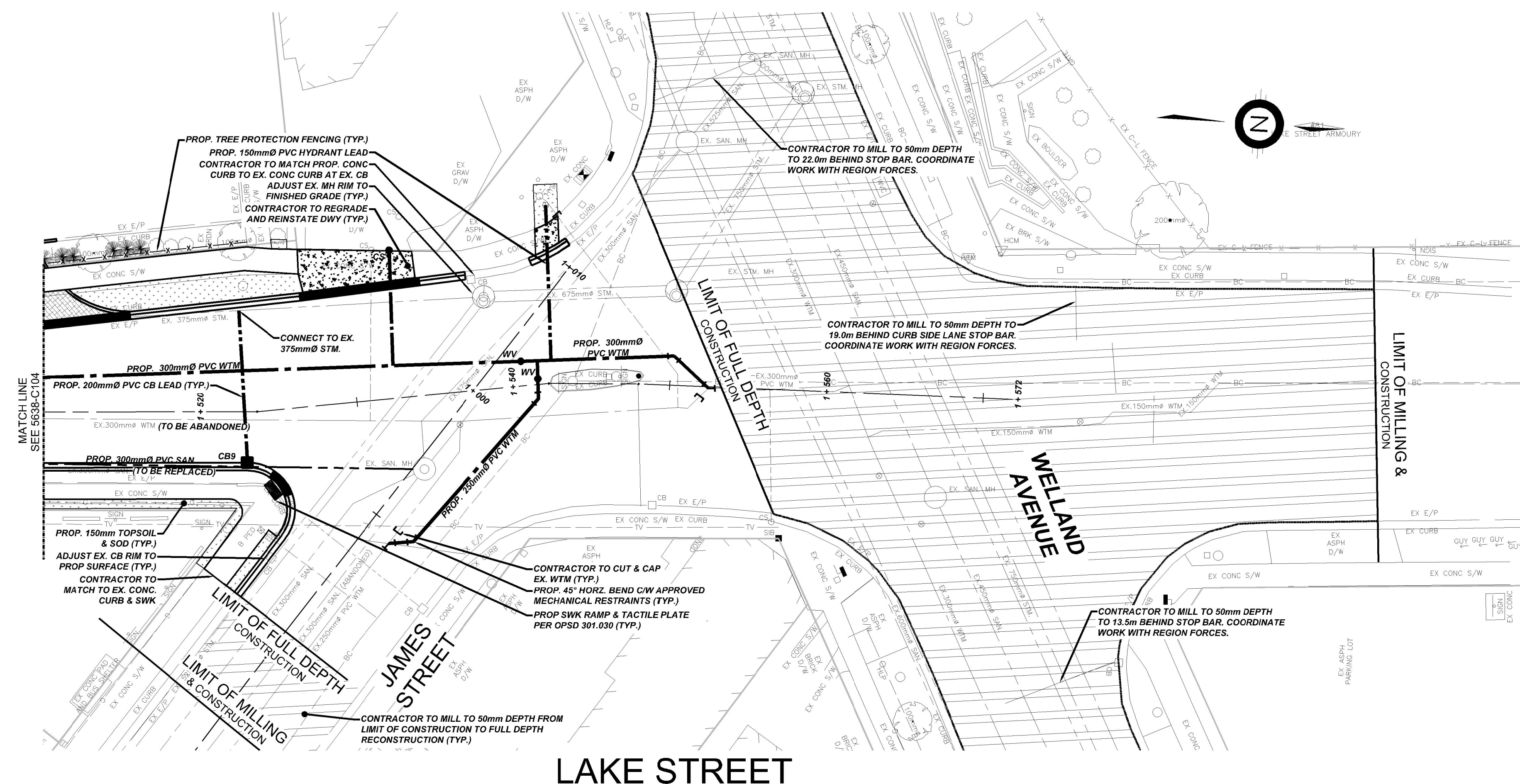
ST. CATHARINES



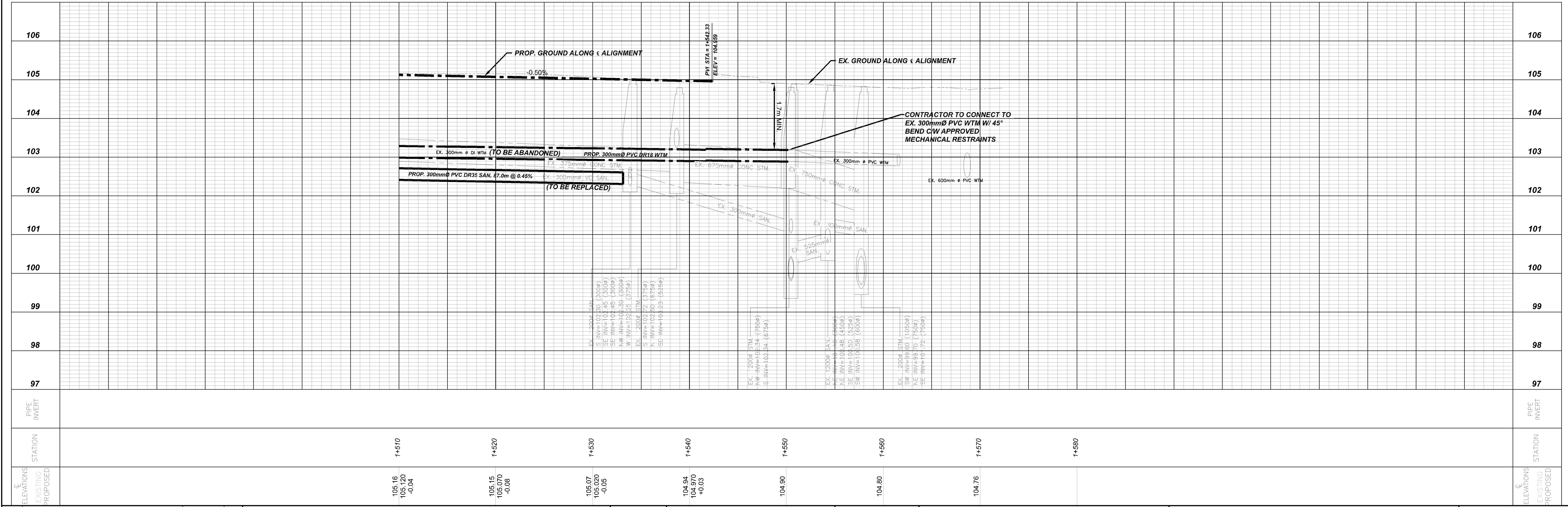
Associated Engineering

LAKE STREET ROAD IMPROVEMENTS
 FROM WELAND AVE TO ONTARIO ST
 IN THE CITY OF ST. CATHARINES
 ROAD GEOMETRICS
 STA 1+410 TO 1+510

CONSULTANT FILE No.	2022-5638
DATE	MAY 2021
SCALE	Hor : 1:200 m Ver : 1:50 m
REF. No.	P18-062-1
DWG No.	5638-C104
REV.	0



- NOTES:**
1. CONTRACTOR TO VERIFY SIZE AND LOCATION OF SERVICES PRIOR TO CONSTRUCTION.
 2. WATER SERVICES TO BE REPLACED FROM PROP. WATERMAIN TO PROPERTY LINE C/W NEW MAIN STOP, CURB STOP AND CURB BOX. EX. CURB BOXES TO BE REMOVED.
 3. WHERE NEW SANITARY SEWER IS BEING INSTALLED, CONTRACTOR TO REPLACE ALL EX. SANITARY LATERALS W/ 199mm DIA. DR28 PVC TO PROPERTY LINE INCLUDING CLEANOUT.



NO.	REVISION	DATE	INIT.
0	ISSUED FOR TENDER	2022-04-08	FB
A	ISSUED FOR PRELIMINARY DESIGN REPORT	2021-09-21	MZ

STATION	EXISTING ELEVATIONS	PROPOSED ELEVATIONS
1+510	105.16	105.120
		-0.04
1+520	105.15	105.070
		-0.08
1+530	105.07	105.020
		-0.05
1+540	104.94	104.970
		+0.03
1+550	104.90	
1+560	104.80	
1+570	104.76	
1+585		

DRAFTING	JTB
DESIGN	JTB
CHECKED BY	MM
APPROVED BY	AL

ST. CATHARINES

Associated Engineering

LAKE STREET ROAD IMPROVEMENTS
 FROM WELAND AVE TO ONTARIO ST
 IN THE CITY OF ST. CATHARINES
 ROAD GEOMETRICS
 STA 1+510 TO 1+585

CONSULTANT FILE No.	2022-5638
DATE	MAY 2021
SCALE	Hor : 1:200 m Ver : 1:50 m
REF. No.	P18-062-1
DWG No.	5638-C105
REV.	0